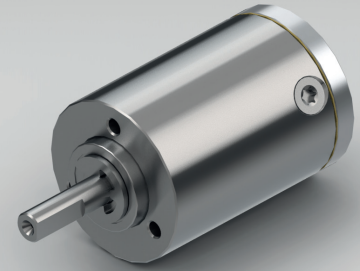


## PLANETARY GEARBOX GPL022

stainless steel version



		1-STAGE	2-STAGE	3-STAGE	
Ratio i:1	Max. motor shaft-ØD	16	4	Ratio i:1	Max. motor shaft-ØD
				64	4
				80	4
				112	4
20	4	140	4		
4	4	28	4	196	4
5	3	35	3	245	3
7	1.5	49	1.5	343	1.5

**Standard scope of delivery** Gearbox lubricated for duration of service life, dust-proof package, motor pinion, mounting screws, paper gasket and assembly instructions (adapter plate optional).

Customized versions also available for small quantities.

Rated torque continuous	Type Standard	Type R	Nm	0.1	0.5	1.5
Rated torque intermittent	Type Standard	Type R	Nm	0.2	1	3
Rated torque continuous	Type V		Nm	0.2	1	1.5
Rated torque intermittent	Type V		Nm	0.4	1.5	3
Max. efficiency at rated torque			%	90	85	80
Average backlash at no load	Type Standard	Type V	arcmin ≤	20	35	50
Average backlash at no load	Type R		arcmin ≤	10	20	30
Weight without adapter plate			g	50	75	100
Dimension L			mm	21	28	35
Dimension A			mm	4.25		
Dimension B			mm	12.5		
Max. radial load	F <sub>R</sub>	6 mm from shaft end	N	30		
Max. axial load	F <sub>A</sub>		N	24		
Max. continuous rated speed at drive			min <sup>-1</sup>	6000		
Max. intermittent rated speed at drive			min <sup>-1</sup>	10000		
Temperature range	Type Standard	Type R	°C	-30 / +90		
Temperature range	Type V		°C	-40 / +90		

Type V = heavy duty version | Type R = reduced backlash version

Changes reserved © GYSIN AG | 10/2014